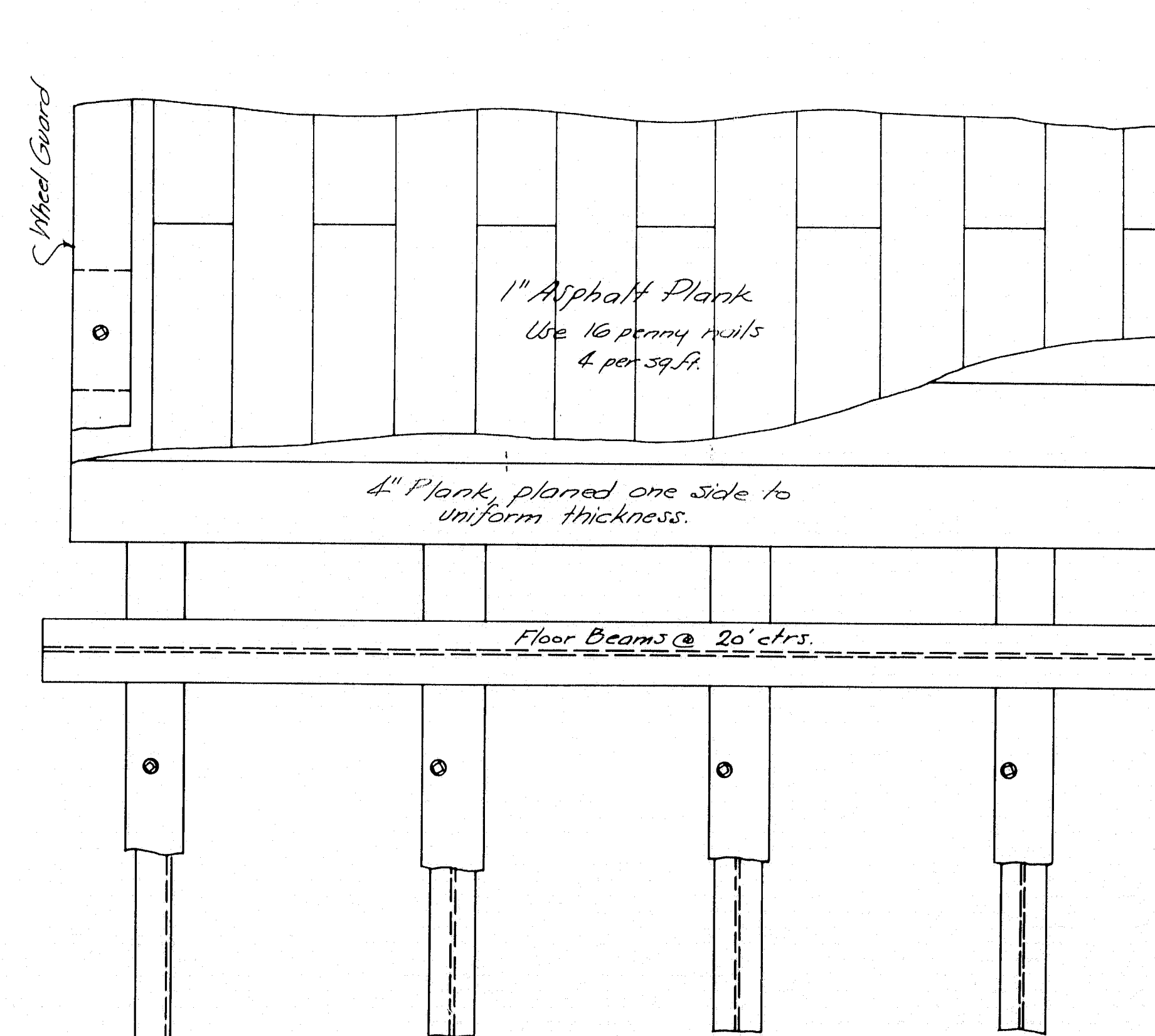
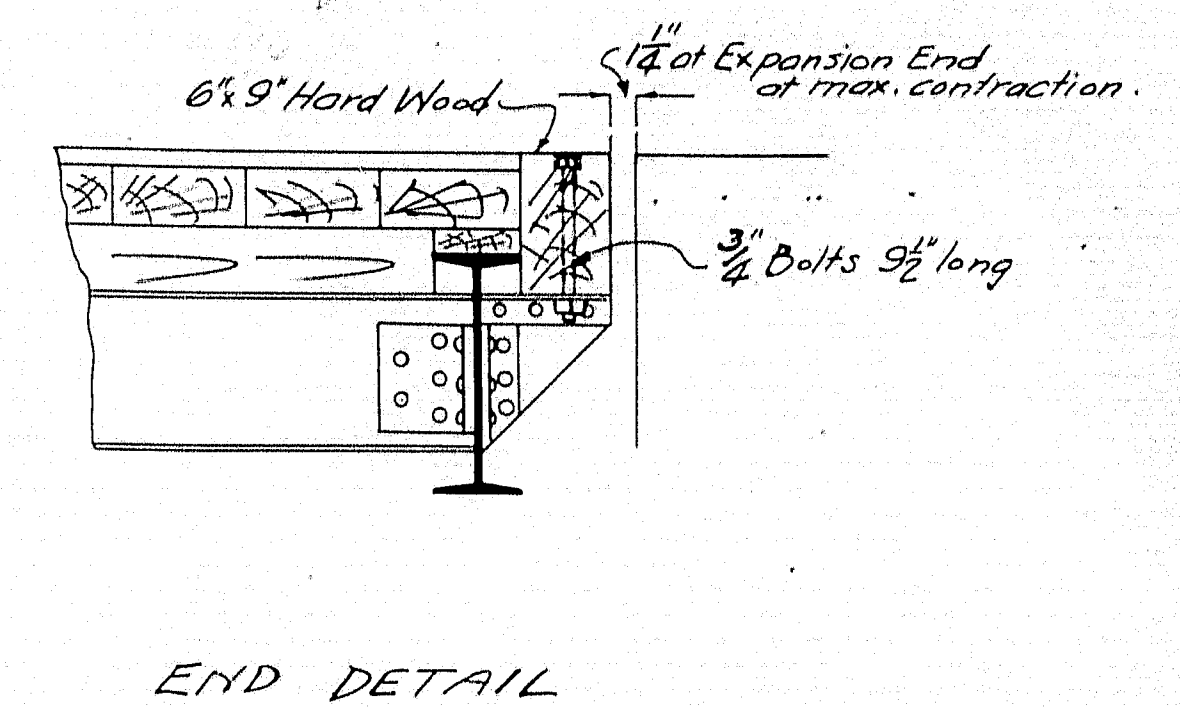
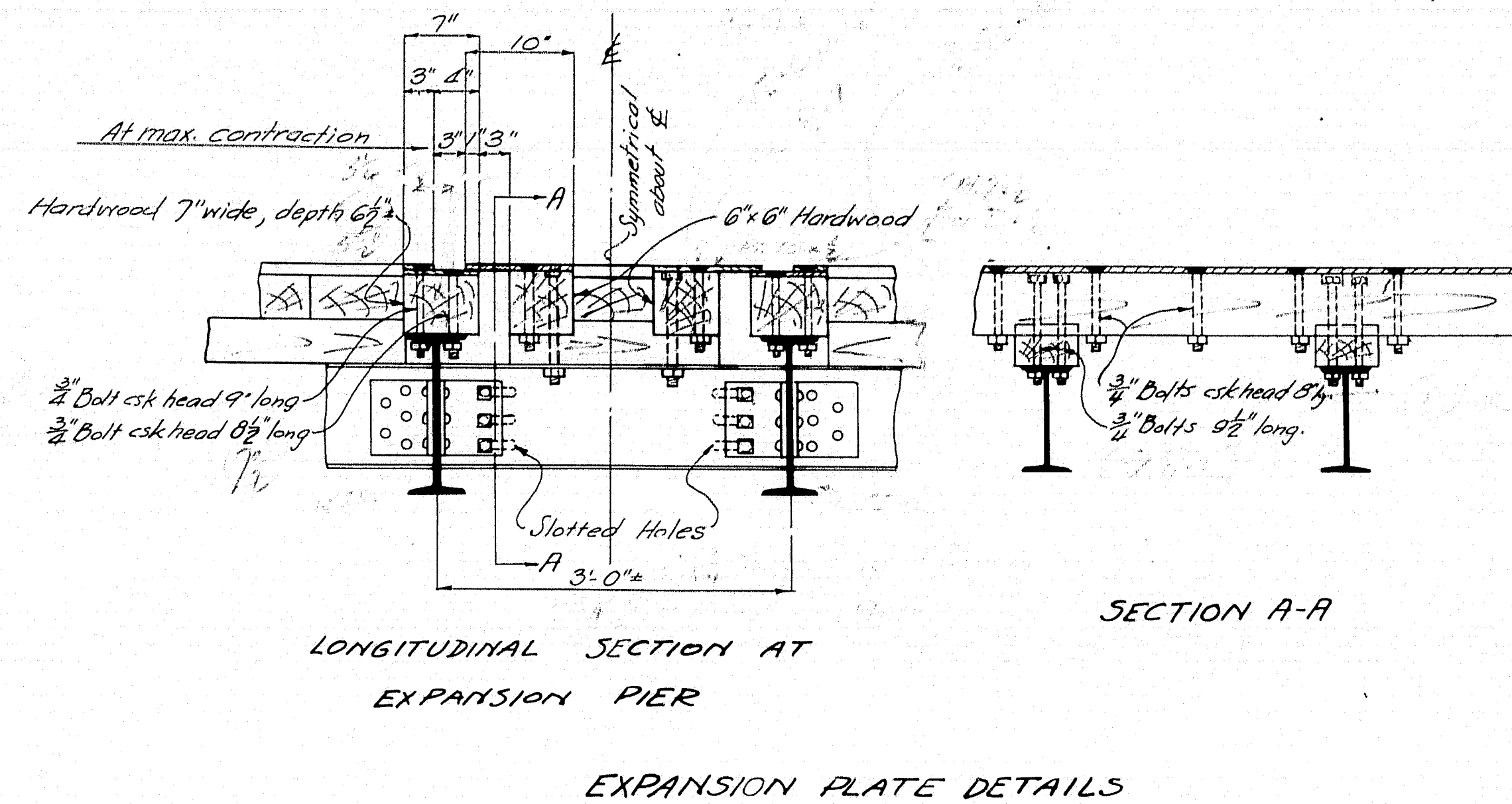


HALF CROSS-SECTION



PART PLAN OF FLOOR

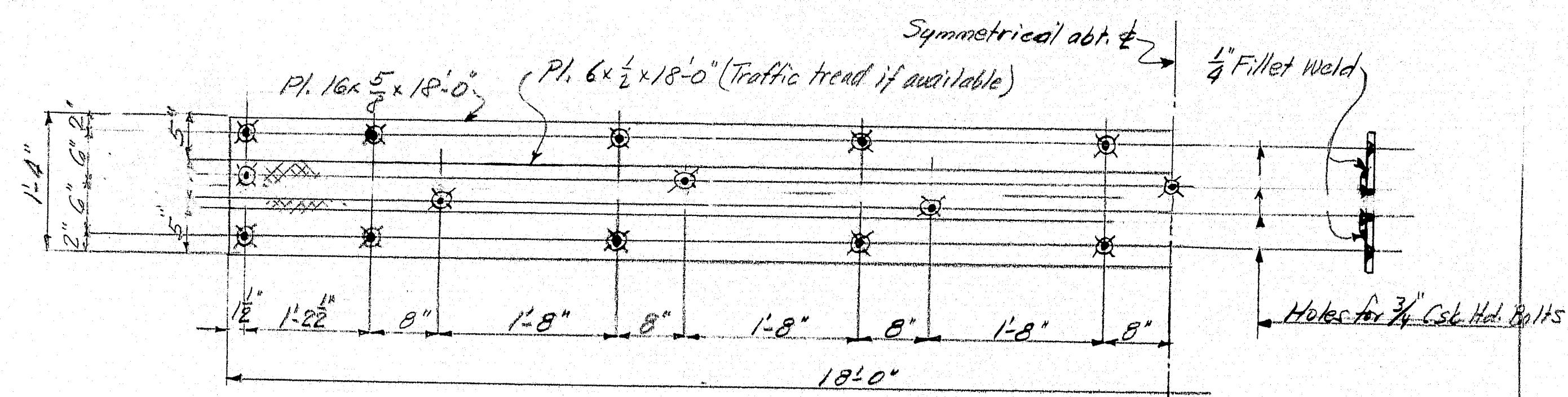


BRIDGE MAINTENANCE

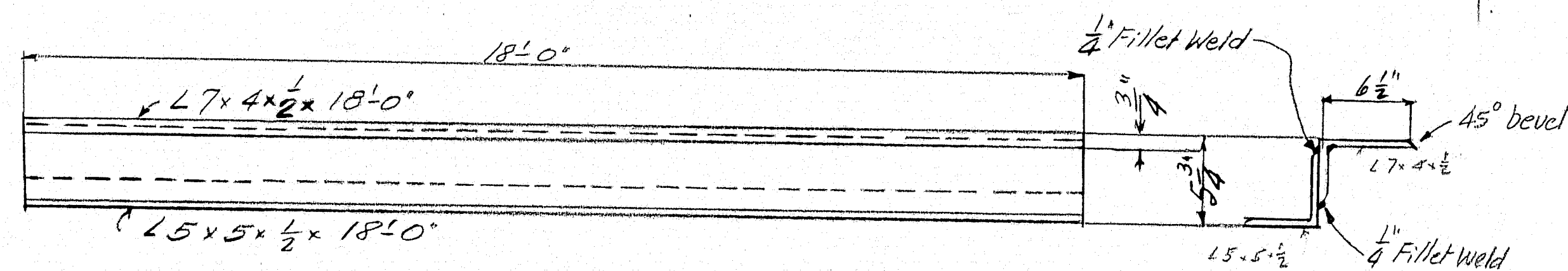
MAINE HIGHWAY COMMISSION
BRIDGE DIVISION
EMBDEN-SOLON BRIDGE
OVER
KENNEBEC RIVER
BETWEEN THE TOWNS OF
EMBDEN AND SOLON, SOMERSET CO.
REFLOORING PLANS
AUGUSTA, MAINE OCT. 3, 1931.

21-104

0 1 2 3 4 5 INCHES



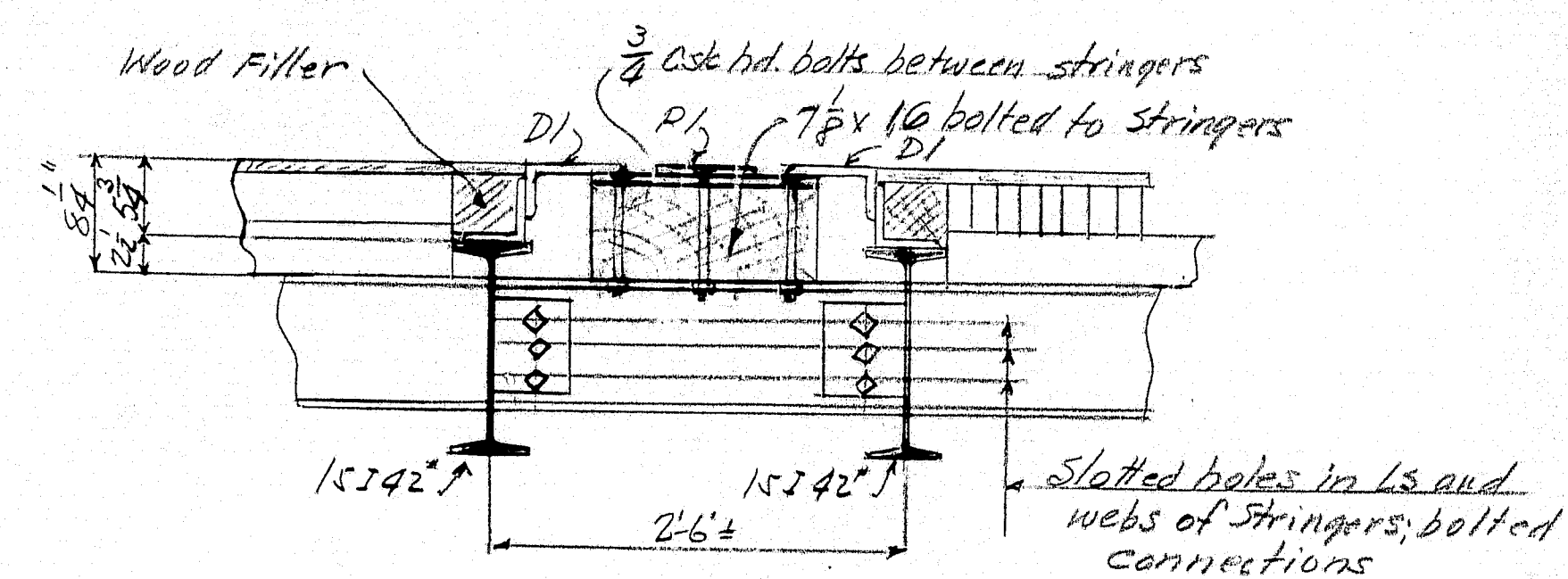
EXPANSION PLATE P1 - ONE REQ'D



EXPANSION DAM D1 - 2 REQ'D

BOLTS REQUIRED

- 20 - C&G Hd. $\frac{3}{4}$ " x 9"
- 10 - C&G Hd. $\frac{3}{4}$ " x 9 $\frac{1}{2}$ "

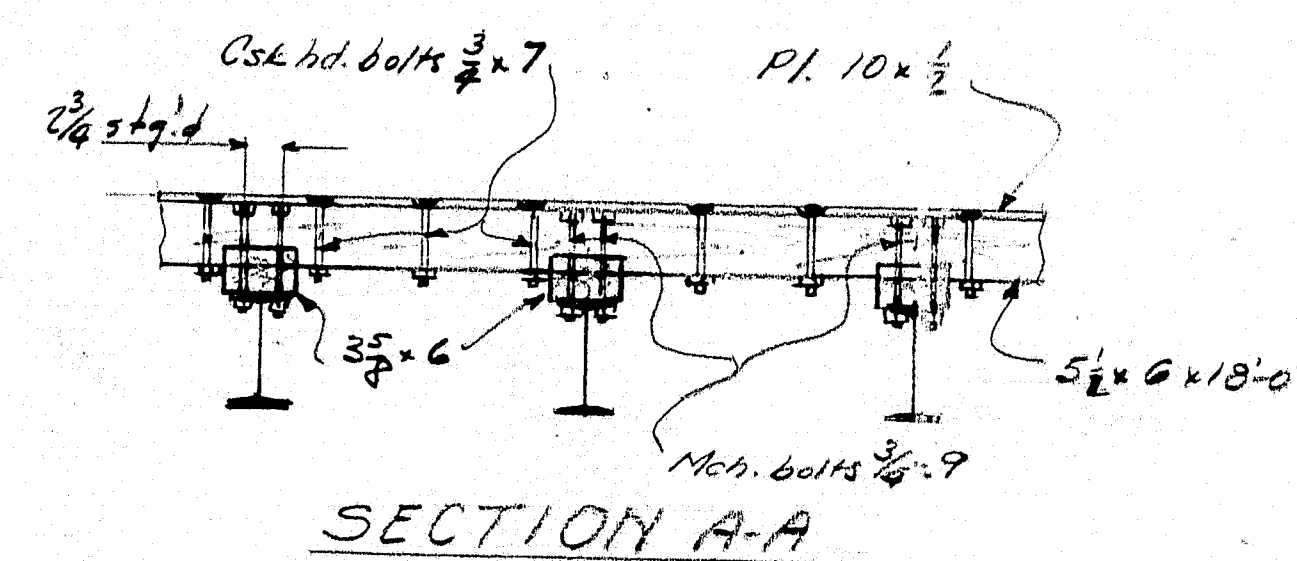
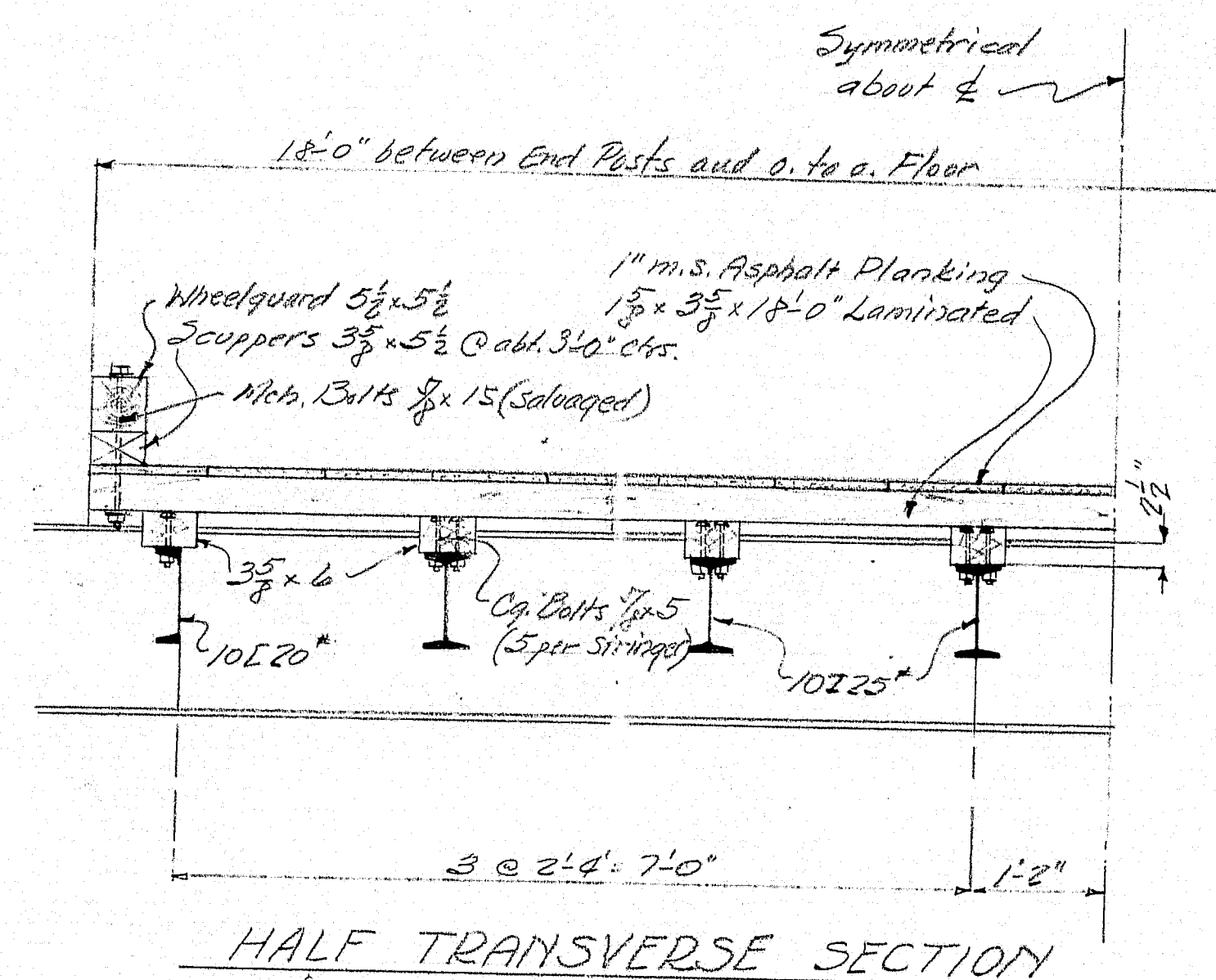


ASSEMBLY OF EXPANSION PARTS
AT WEST PIER
(Field weld D1 to top of floorbeams)

128-106

STATE HIGHWAY COMMISSION
BRIDGE DIVISION

EXPANSION PARTS FOR
EMBERT SLOAN BRIDGE
JUNE 27, 1946 AUGUSTA, MAINE



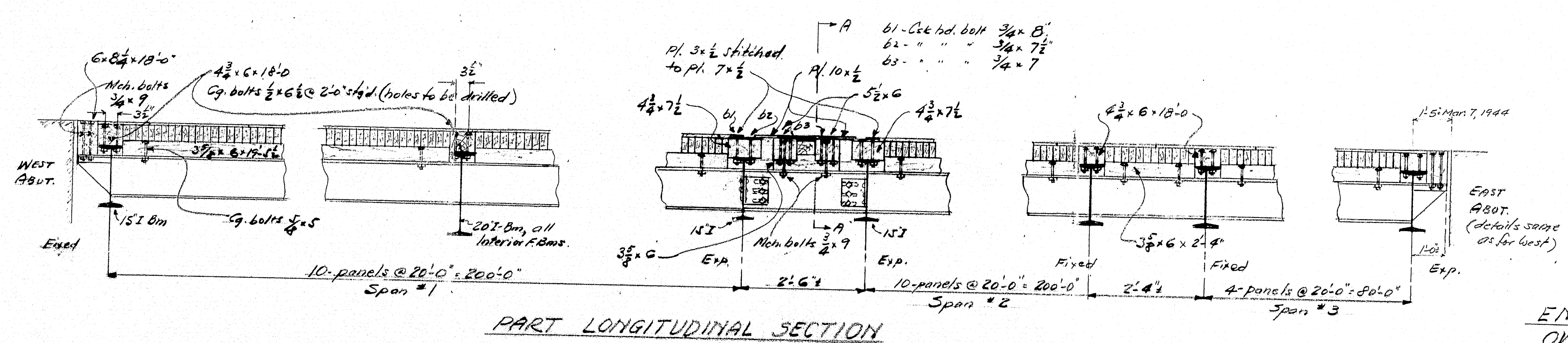
LUMBER FURNISHED				
No. Pcs.	Dress.	Size	Length	Remarks
3550	S4S	$1\frac{3}{8} \times 3\frac{5}{8}$	18'-0"	Laminated Floor
0	S2S	$3\frac{5}{8} \times 6$	2'-4"	Sp. Pos. at Fix. Pier
192	"	"	19'-5"	" " for 20' panels
6	"	"	20'-0"	" " at Expn. & Extra
25	"	$4\frac{3}{4} \times 6$	18'-0"	Tops of Floorbeams
2	S4S	$4\frac{3}{4} \times 7\frac{1}{2}$	18'-0"	Top FBm. at Expn.
2	S2E	$6 \times 8\frac{1}{2}$	18'-0"	End Timbers, brackets
2	S2S	$5\frac{1}{2} \times 6$	18'-0"	Between FBms at Expn.
260	S4S	$3\frac{5}{8} \times 5\frac{1}{2}$	12'-0"	Scuppers
60	"	"	2'-0"	" at splices
50	"	$5\frac{1}{2} \times 5\frac{1}{2}$	20'-0"	Wheelguards

All lumber is Douglas Fir, Notmanized.

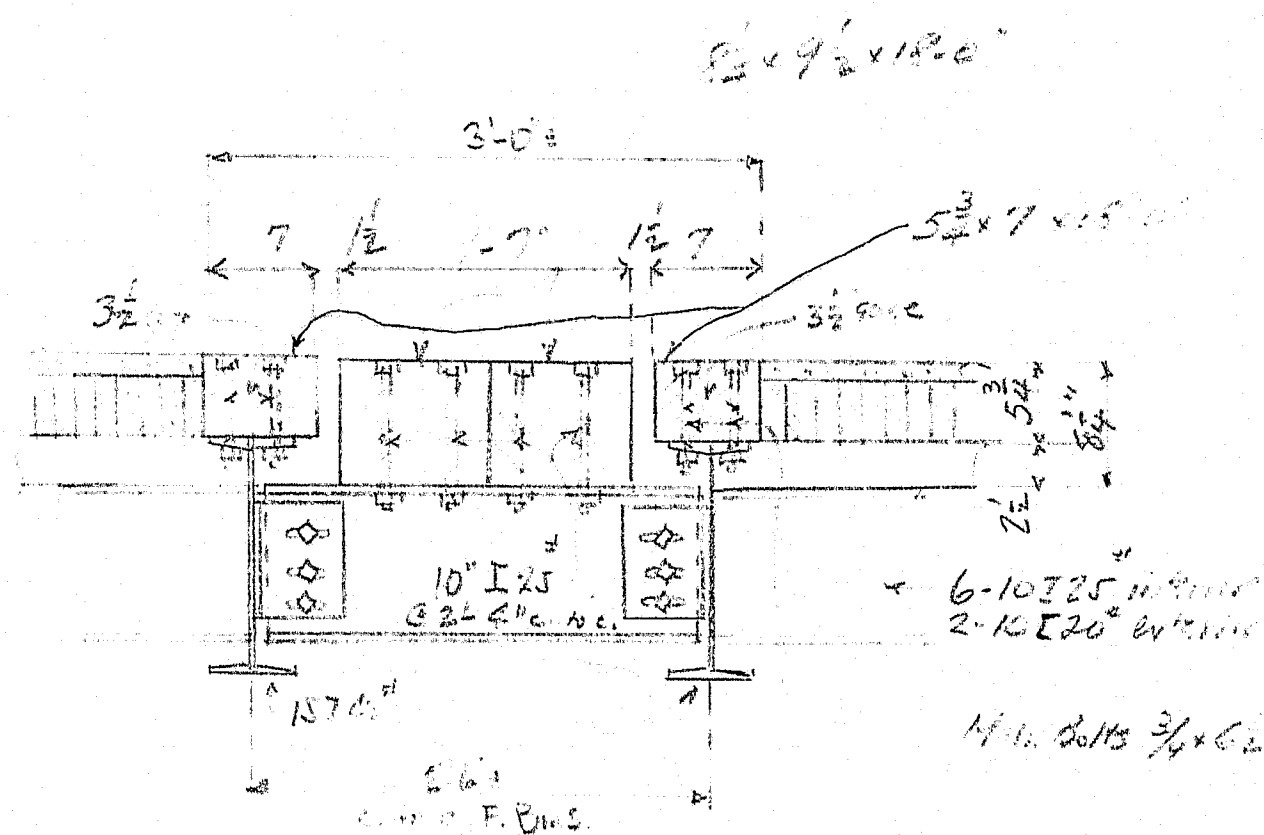
9000 sq. ft. 1" m.s. Asphalt Plank ordered.

HARDWARE FURNISHED		
250	Cg. bolts $\frac{1}{2} \times 6\frac{1}{2}$	Timbers to F.Bms.
1000	" " $\frac{3}{8} \times 5$	Spk. nos. to stringers
75	Nch. bolts $\frac{3}{4} \times 9$	End Timbers & Expn.
50	Csk. hd. bolts $\frac{3}{4} \times 7$	Expn. plates to wood
25	" " " $\frac{3}{4} \times 7\frac{1}{2}$	" " " "
300	Low. Washers $\frac{1}{2}$ " SAE Std.	
1000	" " $\frac{1}{16}$ " " "	
200	" " $\frac{3}{4}$ " " "	
60	lbs. Std. Wrought Washers $\frac{3}{4}$ "	
400	" Common Nails 20 d	
1200	" " 30 d	
1000	" Barbed Car Nails 16 d, Oval Hd.	

Note: Cc. from salvage or other sources:
 18" Csk. hd. bolts $\frac{3}{4} \times 8$ for expn. pls.
 342 Nch. bolts $\frac{3}{4} \times 15$ for wheelguards.

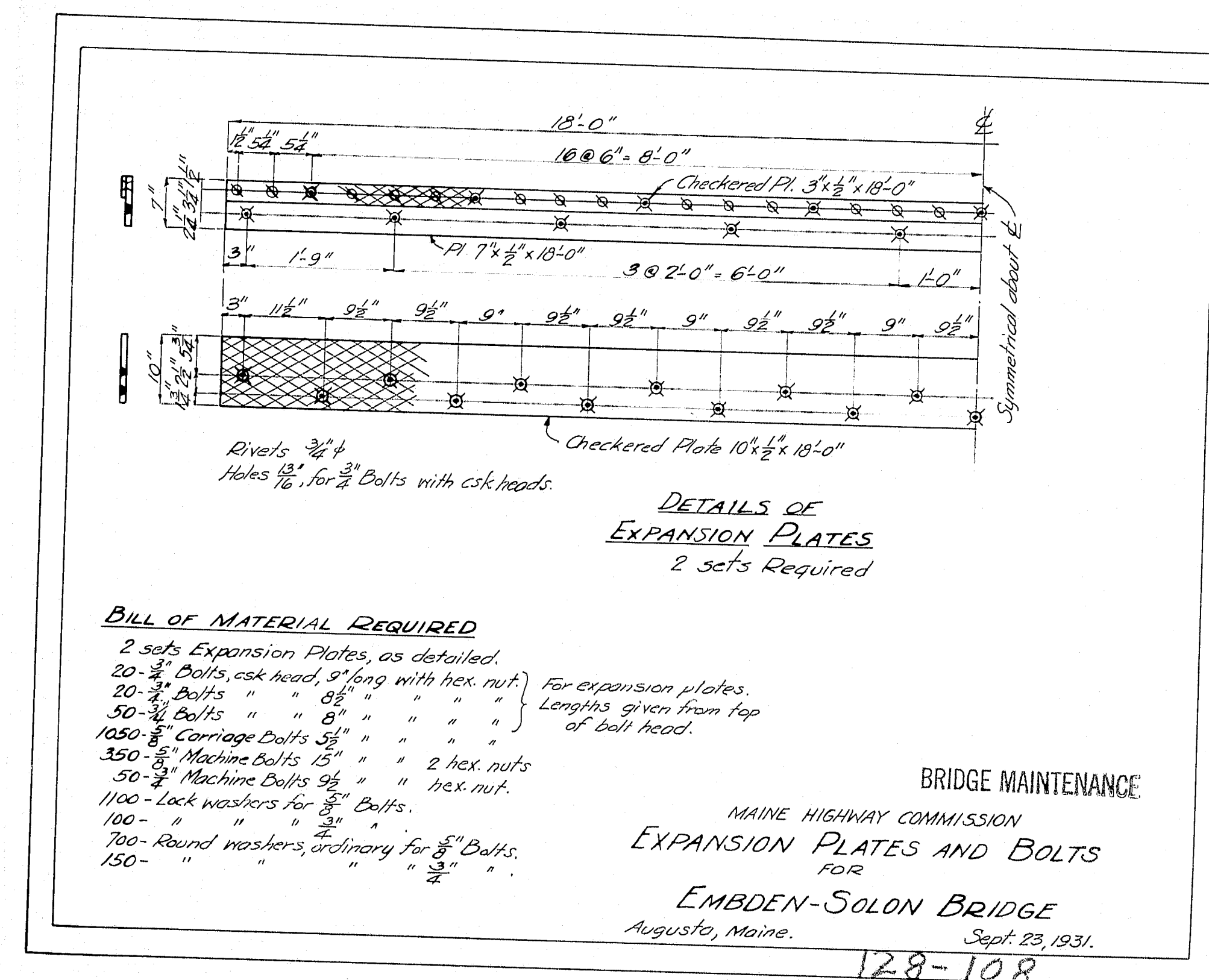
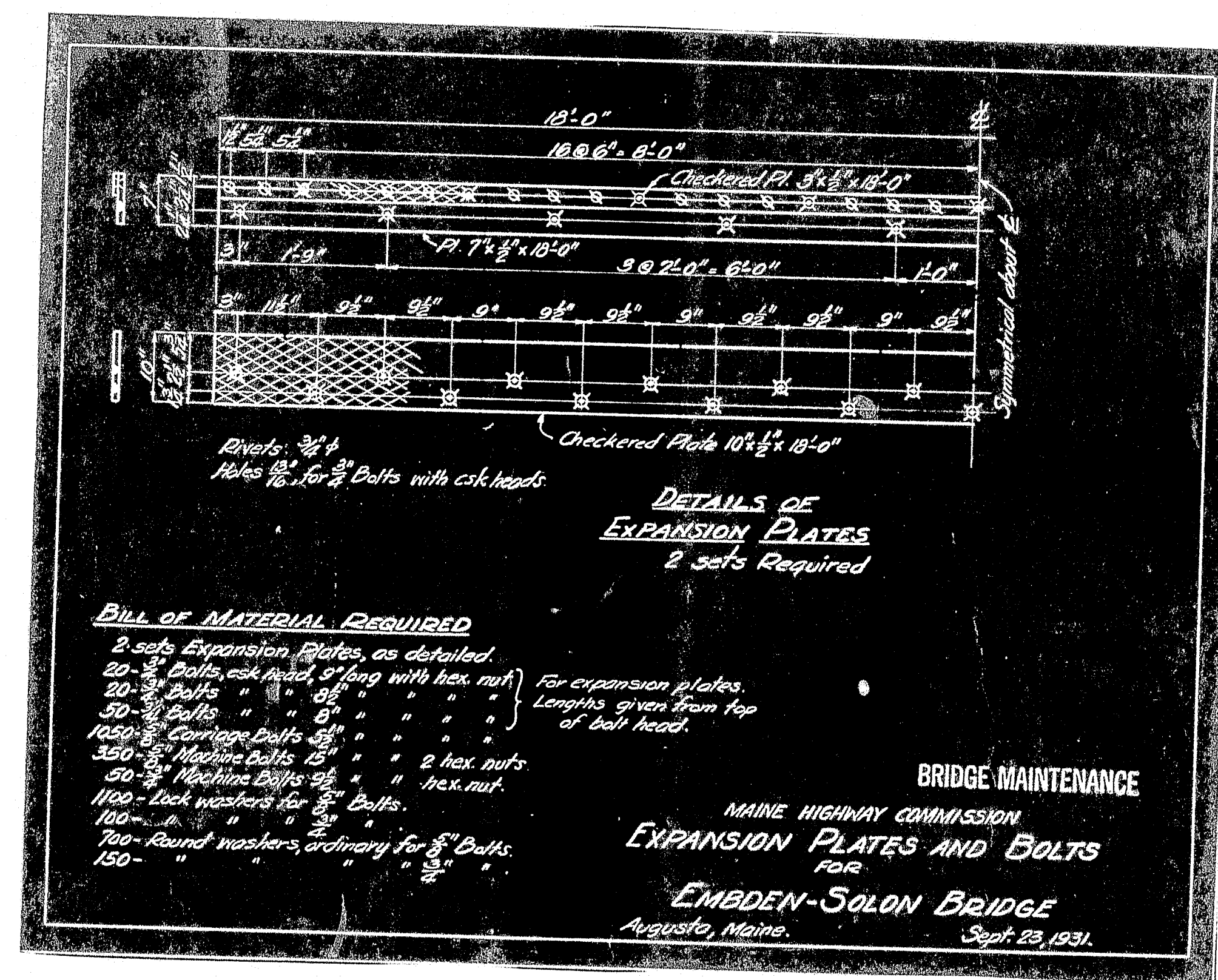


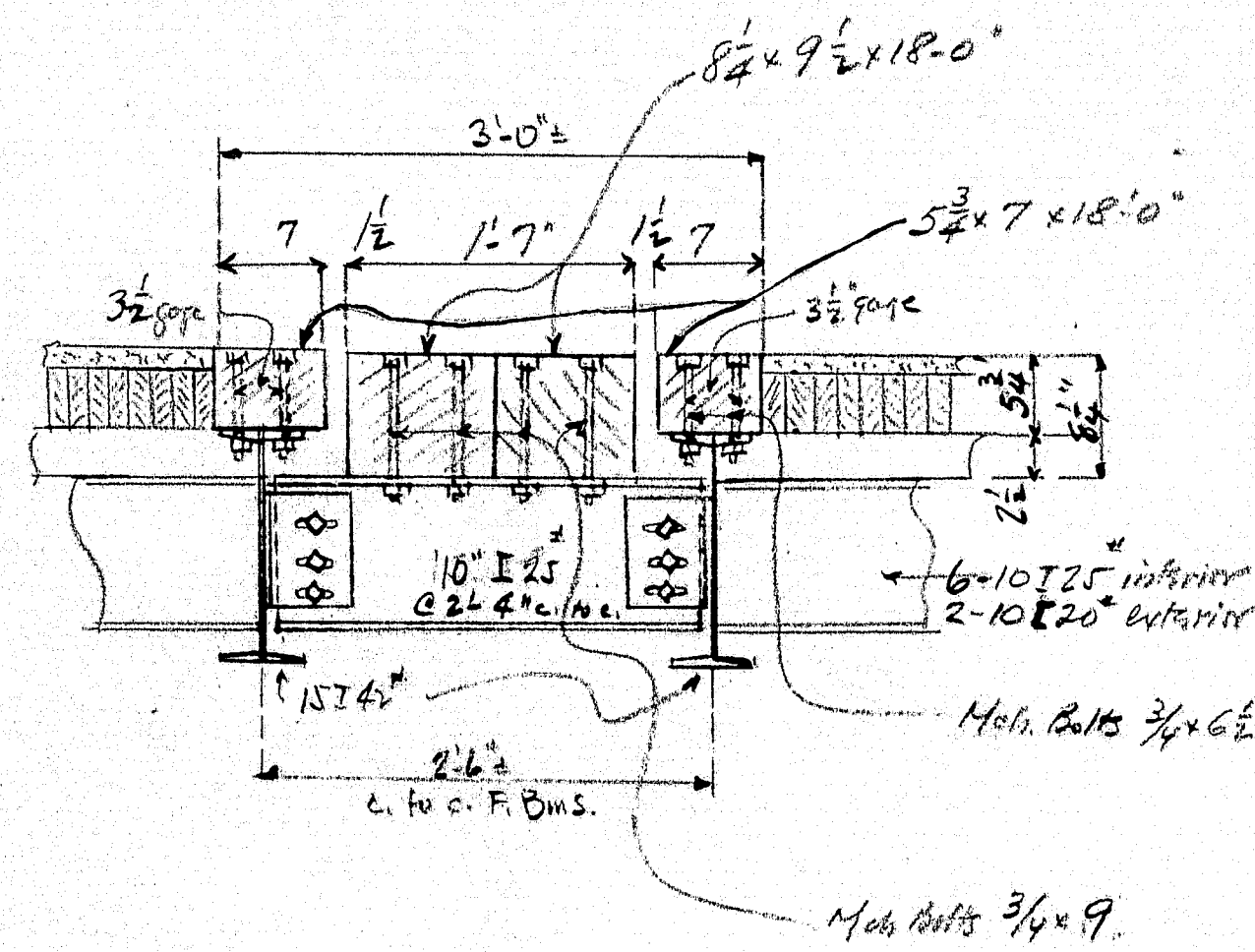
STATE HIGHWAY COMMISSION
 EMBDEN-SOLON BRIDGE
 OVER KENNEBEC RIVER
 REFLOORING DETAILS
 November 1943
 Augusta, Maine



11/10/31 3/4 x 9

EMBDEN-SOLON BRIDGE
Expansion Plates and Bolts
Oct. 1, 1931





EMDEN-SOLON BRIDGE
EXPANSION DETAIL
00-111947

